

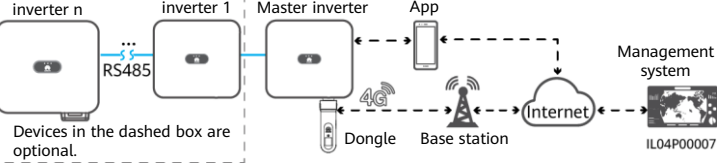
SDongleB-06 Smart Dongle Quick Guide (4G)



NOTICE
The information in this document is subject to change without notice. Every effort has been made in the preparation of this document to ensure accuracy of the contents, but all statements, information, and recommendations in this document do not constitute a warranty of any kind, express or implied.

- SDongleB-06 Smart Dongle (also referred to as the Dongle) is a smart communications expansion module that works with Huawei inverters to implement wireless communication between inverters and the management system through the 4G network.
- If multiple inverters are cascaded, use either a Dongle or a SmartLogger for networking. You cannot use two networking methods at the same time.

1 Communication Scenario



NOTE
In the networking, the inverter where the Dongle is installed is the master inverter, and other inverters are slave inverters. Slave inverters can communicate with the Dongle through cascading.
This document uses connection to Huawei FusionSolar Smart PV Management System as an example. For details about connection to a third-party management system, see the user manual.
For details about Dongle performance parameters and supported inverter models, see the user manual.



Number of Devices Required for Networking

Table with 4 columns: Limit, Maximum Number of Devices That Can Be Connected to the Dongle, Number of Slave Inverters, and Number of Non-Inverter Devices (Such as Power Meters). Rows show configurations for 10 and 2 inverters.

NOTE
The number of devices that can be cascaded varies with the Dongle model. You can view the maximum number of devices that can be connected to the Dongle from the label on the external package.
If devices are connected to the RS485-2, RS485_2, or 485B2 and 485A2 ports of the master inverter, the devices are not included as cascaded devices.

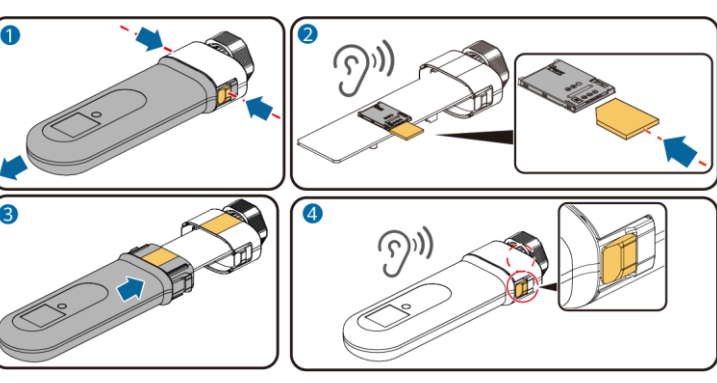
2 Installation and Commissioning

- 1. Install a SIM card.

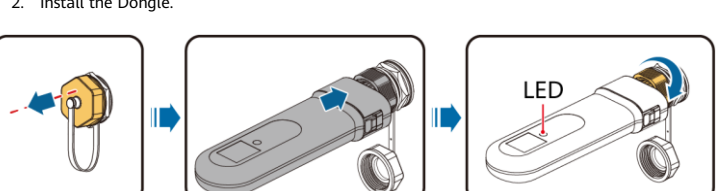
NOTE
You need to prepare a standard SIM card (size: 25 mm x 15 mm; capacity: ≥ 64 KB). When connecting to Huawei FusionSolar Smart PV Management System, prepare a SIM card based on the data requirements in the following table.
Before installing a SIM card, you need to remove the Dongle from an inverter.

Table with 2 columns: Recommended Monthly Requirement Plan for the SIM Card and Data Capability. Rows show requirements for Inverters (with/without power meter, with/without energy storage system) and With optimizers.

NOTE
If the inverter is connected to both the poverty alleviation monitoring center and the FusionSolar Smart PV Management System, the recommended monthly data plan of the SIM card is 14 MB + 19 MB x Number of inverters.
In China, a SIM card with a maximum data plan of 100 MB is provided. If the calculated data exceeds the maximum, you are advised to purchase a SIM card by yourself.
The following are examples of recommended monthly data plans for a SIM card to be used with the FusionSolar Smart PV Management System:



- 2. Install the Dongle.



NOTE
Ensure that the AC and DC sides of the inverter are powered on before setting parameters.

- 3. Install the FusionSolar app. Perform the Setup wizard operations. If you have performed such operations, skip this step. If not, you can scan the QR code below to obtain the app quick guide which describes the Setup wizard operations.

NOTE
You can obtain SIM card parameters from the SIM card carrier. For more details about how to use the app, scan the QR code to obtain related documents.
To create multiple installer accounts for a company, log in to the app and then tap Add user.

Table with 4 columns: LED, Color, Status, Remarks, and Description. Rows describe various LED states (Off, Yellow, Green, Red, Blinking red and green alternately) and their corresponding meanings and actions.

- 4. Commission the inverter locally via the Smart Dongle WLAN. If the Smart Dongle WLAN is disabled, log in to the FusionSolar app and tap the plant name on the Home screen to access the plant screen. Tap Devices and then tap SDongleB-06. Choose O&M Authorization > WLAN wakeup > Confirm to enable the Smart Dongle WLAN.

NOTE
If the inverter has a built-in WLAN module, the Smart Dongle WLAN is disabled by default. If the inverter does not have a WLAN module, the Smart Dongle WLAN is enabled by default.



4 Obtaining Documentation

NOTE
You can obtain the latest version of this document by scanning the following QR codes.

